



# Chicago Metropolitan Agency for Planning

## Energy Efficiency Opportunities for Your Business

### ENERGY IMPACT ILLINOIS



# ENERGY IMPACT ILLINOIS

## Agenda

- **EI2 – Brief Overview and Program Design**
- **MPC Home Energy Renovations for Employees**
- **IFF Non-Profit Program**
- **NorthShore Gas Programs**

# ENERGY IMPACT ILLINOIS

## Program Design: Addressing the “Three Key Barriers”

Information

Communications  
Strategy

EI2 Website

MyHomeEQ  
(Residential Energy Tool)

PositivEnergy  
(Commercial Energy Tool)

Financial Resources

Single-Family Residential

Multifamily

Large Commercial /  
Nonprofit

(\$125 million in private  
investment)

Trained Workforce

Workforce Intermediary

# ENERGY IMPACT ILLINOIS

## Commercial/Industrial Retrofit Lending Program

- **SCIEnergy**
  - Managed Energy Services Agreement (MESA)
  - SCIEnergy assumes all of building's energy expense
  - Retrofit work completed under MESA model
  - No debt incurred on the books
  - Costs paid for by energy savings



# ENERGY IMPACT ILLINOIS

## EnCompass - Commercial Energy Tool

- **Positive Energy Practice**
  - Introduces building owners to energy savings opportunities

\$\$\$

**Lower costs**  
by an average  
of \$550,000/yr



**Save energy**  
with over 57  
system retrofits

This online tool is your energy compass, helping you discover inefficiencies in your building and suggesting ways to lower your annual energy use.

[Get Started](#)



# ENERGY IMPACT ILLINOIS

ENERGY IMPACT ILLINOIS ENCOMPASS

SURVEY ACCURACY ●●●●●

COMPARE

233 S. WACKER DRIVE

97.4 kBTU/SF/YR

ENERGY STAR® (EPA ENERGY PERFORMANCE SCORE OF 75) 99

CBEC'S 134

2 selected / 9 recommendations remain

<b>VAV UPGRADE</b> ENERGY SAVINGS ●●●●● YEARLY SAVINGS \$ \$ \$ \$ \$ ADD	<b>COOLING UPGRADE</b> ENERGY SAVINGS ● YEARLY SAVINGS \$ REMOVE	<b>HEATING UPGRADE</b> ENERGY SAVINGS ●● YEARLY SAVINGS \$ ADD	<b>AIR SIDE ECONOMIZER</b> ENERGY SAVINGS ●● YEARLY SAVINGS \$ \$ \$ \$ REMOVE
--	---	---	---

ACT

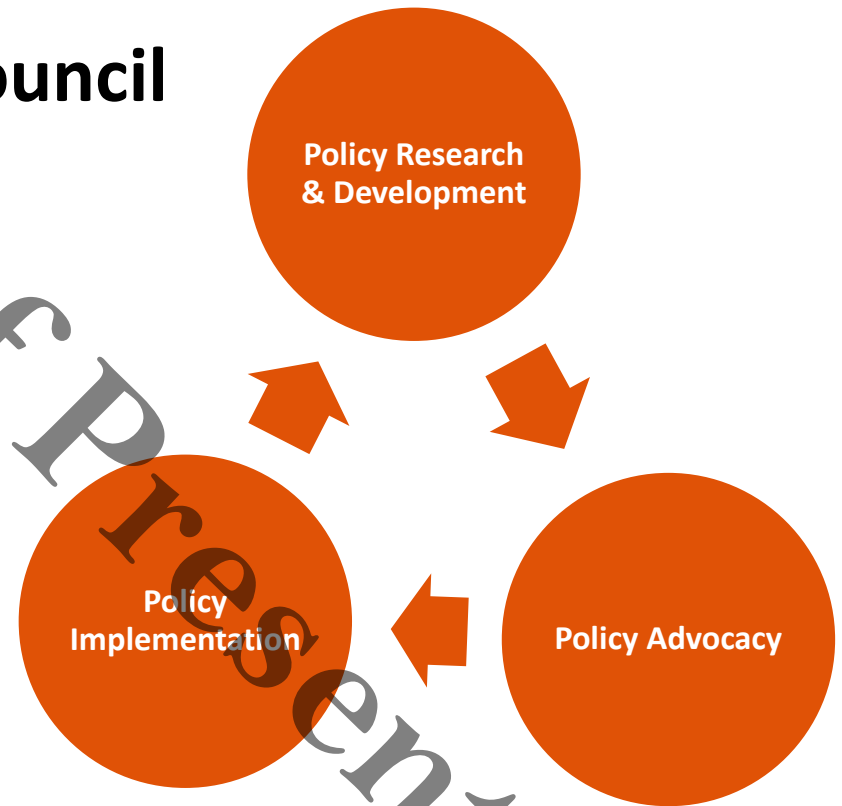
Property of Presenter

# ENERGY IMPACT ILLINOIS

## Home Energy Renovations for Employees (HERE)

- **Metropolitan Planning Council**

Since 1934, the Metropolitan Planning Council (MPC) has been dedicated to shaping a more sustainable and prosperous greater Chicago region. As an independent, nonprofit, nonpartisan organization, MPC serves communities and residents by developing, promoting and implementing solutions for sound regional growth.



# ENERGY IMPACT ILLINOIS

## Metropolitan Planning Council Programs

- HERE (Home Energy Renovations for Employees)
- Employer-Assisted Housing
- Commute Options





# ENERGY IMPACT ILLINOIS

## Home Energy Renovations for Employees (HERE)

- Offered through Energy Impact Illinois
- Administered by MPC with Chicago Metropolitan Agency for Planning and Center for Neighborhood Technology Energy
- 150 matching grants of \$3,000 available for existing homeowners to retrofit their homes



# ENERGY IMPACT ILLINOIS

**HERE: Dollars available now!**

- Employer and/or Employee contribute a combined \$3,000
- HERE provides \$3,000 matching funds
- HERE helps homeowner secure energy audit, select contractor, and complete work
- Benefits to employers include:
  - Unique employee benefit
  - Address corporate sustainability goals



# ENERGY IMPACT ILLINOIS

## HERE Program: Next Steps

- HERE program funds available through early 2013
- Employer must provide matching funds; several options available
- Consider signing up for the program

# ENERGY IMPACT ILLINOIS

## Employer-Assisted Housing

- Began in 2001
- More than 2,500 employees have purchased a home with employer financial support
- More than 4,000 employees have received pre-purchase counseling/education
- For every \$1 dollar of public sector incentives offered, nearly \$4 dollars of private sector dollars are leveraged
- Helps stabilize communities and promotes “living near work”

# ENERGY IMPACT ILLINOIS

## Commute Options Pilot

- Research shows that employers are a good way to promote alternate commute modes
- MPC began recruiting employers for Commute Options Pilot in late 2010
- Twelve employers recruited to date
- Program goals include tracking changes in commute behavior and standardizing TDM Program in Chicago area



# ENERGY IMPACT ILLINOIS

## Non-Profit Lending Program

- IFF

IFF is a nonprofit lender and real estate consultant that works exclusively with nonprofits, including faith institutions.

We know that many nonprofits are thinking about saving energy—to lower costs and to improve the health of the environment.



# ENERGY IMPACT ILLINOIS

## Non-Profit Lending Program

Today, with funding from CMAP and other sources, IFF supports nonprofits' sustainability efforts through:

- Planning, financing, and implementing energy-saving solutions through our **Energy Performance Program (E2P)**
- Providing **affordable, flexible loans** for energy efficiency improvements



*Smart Choices | Informed Investments*

# ENERGY IMPACT ILLINOIS

## Non-Profit Lending Program

IFF developed our Energy Performance Program (E2P) to enable nonprofits to significantly lower energy bills, saving them money on utilities every month for years to come.

- **We evaluate all your energy-saving opportunities**
  - We provide the tools you need to make informed decisions about energy efficiency upgrades
  - Our projections show when the upgrades will pay for themselves through lower utility bills
- **We eliminate upfront costs**
  - We find and help you apply for energy incentives to help offset costs
  - We provide affordable financing for any remaining upfront expenses
- **We manage the project for you**
  - IFF experts manage the implementation of the facility upgrades you choose
  - Our real estate professionals make certain all cost-reduction measures are implemented properly, ensuring maximum energy savings

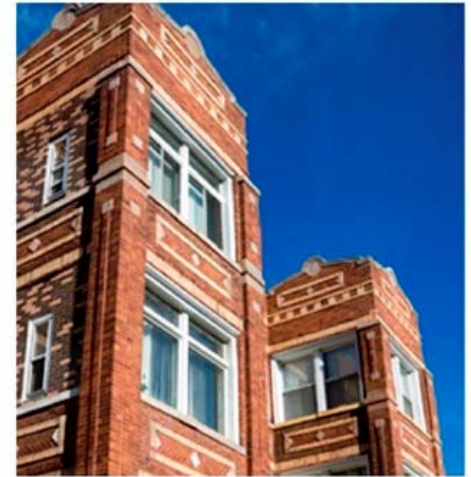
# ENERGY IMPACT ILLINOIS

Property of Presenter

# ENERGY IMPACT ILLINOIS

## Other EI2 Programs

- **Multifamily Loan Loss Reserve**  
EnergySavers (CNT/CIC)
- **Workforce Intermediary**  
Centers for New Horizons
- **Single Family Lending Program**  
Delta Institute





# The County Green Conference at CLC

Overview of Peoples Gas / North Shore Gas  
2011 – 14 Energy Efficiency Programs

*Natural Gas Energy Efficiency in Buildings*

May 17<sup>th</sup>, 2012

Glenn Maxam, Franklin Energy



## Incentives For Energy-Saving Upgrades



*Program Offerings*

*4 Residential Programs*

*4 C & I Programs*

*Program Years 2011  
through May 2014*

## Residential Programs

### Prescriptive Rebate Program (co-delivered with ComEd)

- Single Family and Multi-Family building owners
- Includes low-cost Direct Install measures – low flow, CFLs, etc.
- Furnaces, air conditioners, boilers, reset controls
- On Bill Finance Option for qualifying furnace & air conditioner
- Insulation upgrade



### Multi-Family Direct Install (co-delivered with ComEd)

- Targets apartment buildings greater than 3 units
- Includes low-cost Direct Install measures – low flow, CFLs, etc.
- Great opportunity to offer additional services to end-use customer

## Business Programs Overview

- **Prescriptive** – one-for-one replacements of predetermined measures (boiler/furnace replacement, steam traps)
- **Custom** – energy saving projects with tangible energy savings not covered by prescriptive rebates
- **Small Business Energy Savings** – Free on-site energy assessment and installation of energy saving devices for small businesses
- **Retro-Commissioning** – expert analysis of your commercial or industrial building to ensure optimal performance of energy-using systems

## C&I Prescriptive Program

- Incentivize the purchase and installation of high efficiency equipment
- Some key equipment
  - Steam Trap Repair
  - Boiler Maintenance and Controls
  - Furnace/Boiler Replacement
  - Pipe Insulation
  - Food Service Equipment





## Prescriptive Incentives

Measure	Peoples / North Shore
Steam Trap – documentation needed	up to \$60 / unit
Boilers $\geq$ 300 MBH $\geq$ 85% TE	\$2/MBH input
Boilers $\geq$ 300 MBH $\geq$ 90% TE	\$4/MBH input
Boilers $\leq$ 300 MBH $\geq$ 90% AFUE	\$6.67/MBH input
Condensing Unit Heater, $\geq$ 90% TE	\$2 / MBH input
Boiler Tune-Up – documentation needed	\$.40 / MBH input
Boiler Cut-Out / Reset Controls	\$2.50 / MBH input
Food Service Equipment	\$28 – 1000 / unit
Programmable Thermostats	\$40 / unit
Gas Water Heaters - $\geq$ .62 EF & $\geq$ .67 EF	\$ 50 & \$100

## NEW Prescriptive Rebates for PY2

- Prescriptive
  - Pipe Insulation
  - Expanded Steam Trap Offerings
  - Pool Covers
  - Additional Commercial Kitchen Equipment
  - Industrial Burner Tune-Ups
  - Infrared Heaters

## Peoples Gas C&I Prescriptive Case Study



- Sun Life Assurance Company of Canada
- Installed four 92% efficient boilers
- \$32,000 incentive
- 12,000 therms saved

## Peoples Gas C&I Prescriptive Case Study



- 70 E Cedar Condo Assoc.
- 3) Boiler tune-ups
- \$2,520 incentive
- 1,764 therms saved



## North Shore Gas C&I Prescriptive Case Study



- Walgreens Corporate Campus upgraded their Main Boiler Plant
- 4 x 3,500 MBH Boilers  
>90% TE
- \$64,400 with 15% coupon
- 21,000 therms saved



## Business Custom Program



- Incentives for gas saving projects not listed under prescriptive program
- Energy Engineers work with customers and trade allies to calculate therm savings from project
- Incentives based on \$/therm saved in the first year
- **Pre-Approval REQUIRED**

## Custom Program Information



- Project must have a payback of greater than 1 year and less than 7
  - \$1/Therm saved up to 50%
- Project needs pre-approval, prior to commencement, invoice or PO
- Service Class 2 or higher
  - SC5 is exempt

## Peoples Gas C&I Custom Case Study



- Swissotel
- Laundry hot water recycling system
- 3 commercial washers
- \$29,336 incentive
- 22,295 net therms saved
- Strong interest in energy efficiency, publicity, future projects

## North Shore Gas C&I Custom Case Study



- Craig Bergmann  
Landscaping
- Installation of thermal  
curtains in greenhouse
- \$2,370 Incentive
- 1,800 Net Therm Savings
- Reduction of total  
annual usage of nearly  
20 percent!



## Prescriptive and Custom Program Limits

- Prescriptive
  - \$50,000 per project
  - \$100,000 per program year
- Custom
  - \$100,000 per project
  - \$250,000 (minus Prescriptive Incentives received) per program year



## Small Business Energy Savings Program

- Qualifications
  - 0 – 100 kWh Classification
  - 0 – 60,000 Therm Classification
- On-site energy assessment including direct installation of faucet aerators, pre-rinse sprayers, CFL's and other energy saving measures
- Intensive follow-up / support
- Joint program with ComEd



## Columbia Yacht Club



**Interesting note:** The Manager that ordered the assessment received a promotion due to all the energy savings!

- Direct Install of a pre-rinse sprayer, six showerheads, and sixteen faucet aerators yielded 340 therms annual savings
- Lighting upgrade and electric direct install yielded a total of 45,503 kWh's annual savings

## Stanley's Kitchen and Tap



Chicagoan's LOVE Stanley's (and it's close to a Peoples Gas office!)

- Therm Savings: 939 Therms
  - Direct Installation: 271 Therms
    - 5 faucet aerators
    - 2 Pre-Rinse Sprayers
  - Recommendations: 668 Therms
    - 4 programmable thermostats
    - 2 furnace tune-ups
- Trade Ally: QFS Project Green
- Simple Payback: 9 months!





# ENERGY IMPACT ILLINOIS

## General Questions

Emily Plagman  
Energy Efficiency Project Coordinator  
312-676-7460  
[eplagman@cmap.illinois.gov](mailto:eplagman@cmap.illinois.gov)

## HERE/MPC Questions

Tim Grzesiakowski  
Metropolitan Planning Council  
312.863.6040  
[tgrzesiakowski@metroplanning.org](mailto:tgrzesiakowski@metroplanning.org)

## IFF Questions

Amy Stewart  
Business Development Director  
312-596-5114  
[Astewart@iff.org](mailto:Astewart@iff.org)

Rachel Higginbotham  
Business Development Manager  
312-521-7388  
[Rhigginbotham@iff.org](mailto:Rhigginbotham@iff.org)

Sarah Moloney  
E2P Program Manager  
312-596-5144  
[Smoloney@iff.org](mailto:Smoloney@iff.org)





## Key Contacts

### **FRANKLIN ENERGY**

Glenn Maxam, Outreach Specialist

[gmaxam@franklinenergy.com](mailto:gmaxam@franklinenergy.com)

312-878-0038 ext. 2606

Paige Finnegan, Senior Program Manager

[pfinnegan@franklinenergy.com](mailto:pfinnegan@franklinenergy.com)

312-878-0038 ext. 2614

**Franklin Energy - Chicago Office**

**5450 N. Cumberland – Suite 125**

**Chicago, IL 60656**

**855-849-8928**

[www.peoplesgasdelivery.com/business/rebates](http://www.peoplesgasdelivery.com/business/rebates)

[www.northshoregasdelivery.com/business/rebates](http://www.northshoregasdelivery.com/business/rebates)