



THE  
PATH  
TO BETTER CARE:

Training Tomorrow's  
Healthcare Heroes

College  Lake County™

# THE PATH TO BETTER CARE:

## Training Tomorrow's Healthcare Heroes



With a growing demand for healthcare workers, the state of Illinois turned to community colleges to quickly get trained workers into the field. PATH provides you with financial support to help pay for educational and living expenses. Lake County needs more high-skill workers like you. Help rebuild our local healthcare workforce in a more equitable and diverse way by being part of the solution.

### HOW CAN I BENEFIT FROM THE PATH PROGRAM?

Through a generous grant from the state of Illinois, CLC is providing healthcare students with money for tuition, books, equipment and cost-of-living expenses. Students also have access to other CLC resources such as program-specific tutoring, free loaner laptops, Wi-Fi hotspots and more.

### WHAT DO I NEED TO DO TO APPLY?

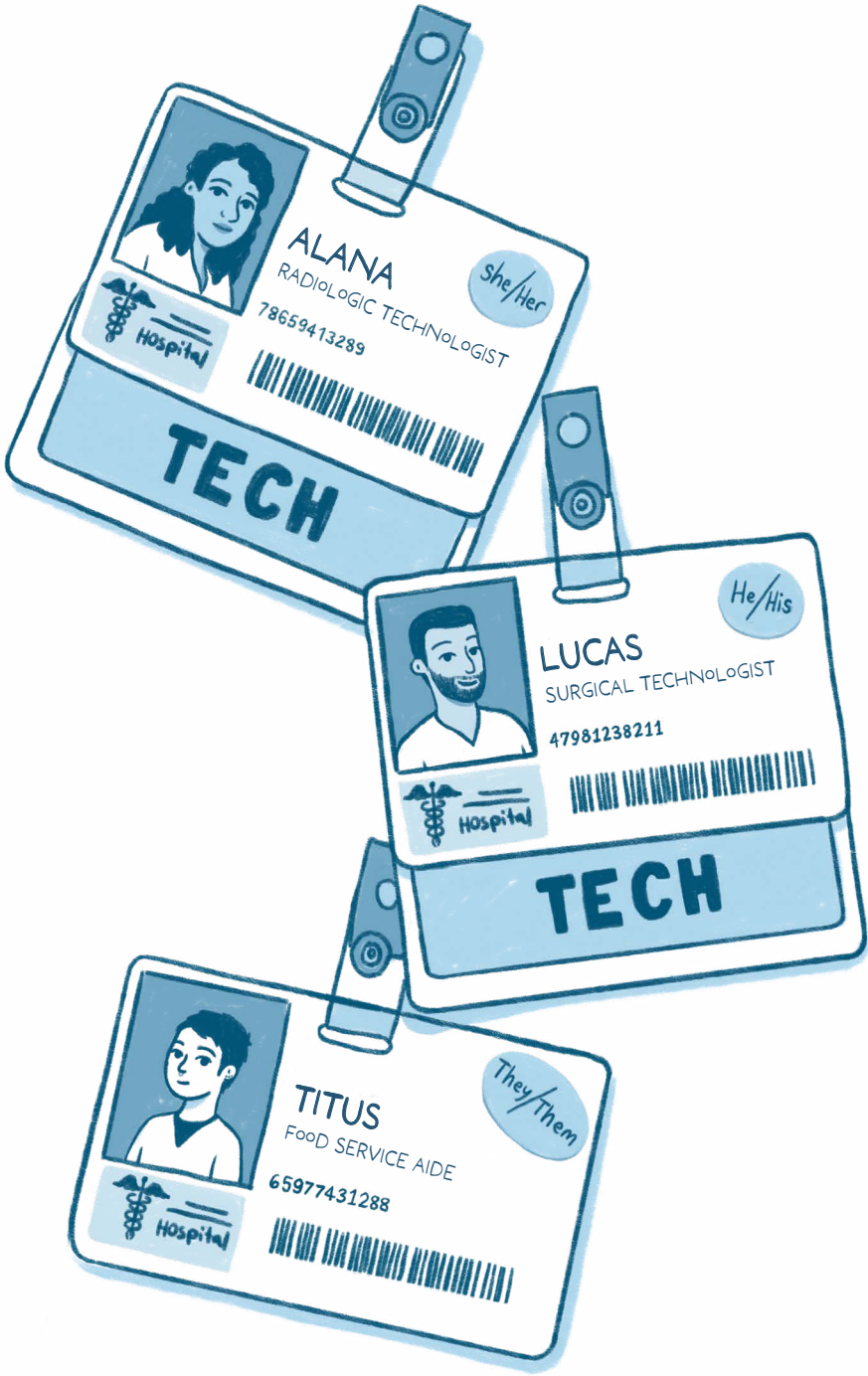
Nothing! Just by enrolling in any eligible healthcare programs, you'll automatically qualify for PATH. There is no need to apply for funds.

### WHAT PROGRAMS ARE PART OF PATH?

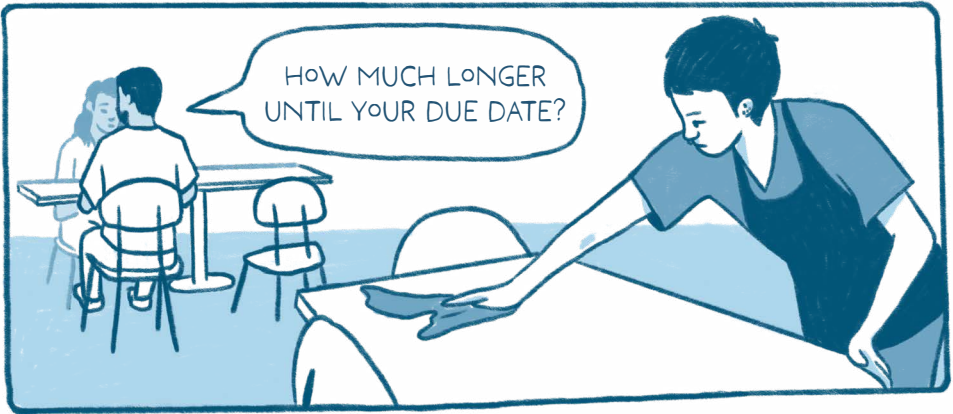
Eligible programs include both certificate programs and associate degree programs.

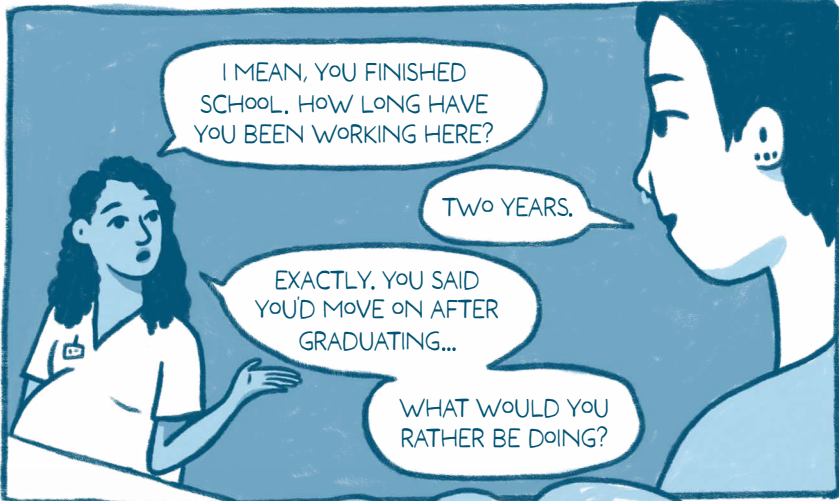
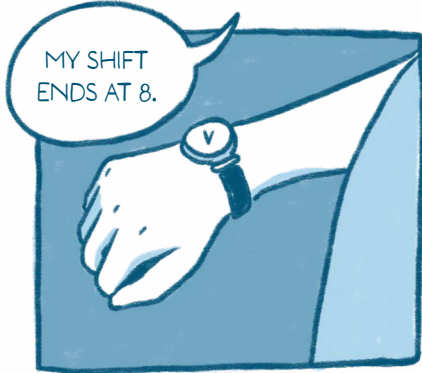
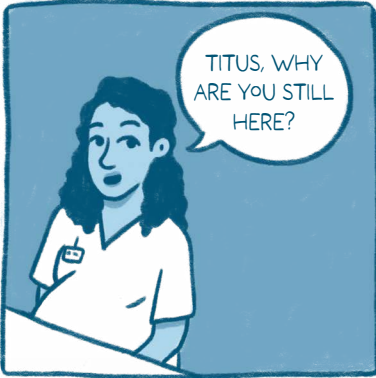
Scan this QR code for a current list of eligible programs:











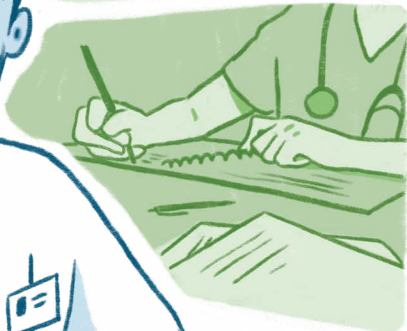


WHEN I WAS A KID, MY DAD HAD HIS HAND CRUSHED WHILE AT WORK. IT WAS BAD AND HE NEEDED SURGERY. TRYING TO TALK TO THE DOCTOR WAS HARD FOR HIM, SINCE HIS ENGLISH WAS PRETTY RUSTY.



HE COULDN'T UNDERSTAND HOW BAD HIS INJURY WAS BECAUSE HE ONLY HAD ME AS A TRANSLATOR. I WAS JUST A KID. I KNEW THEN THAT THERE WERE OTHERS LIKE MY DAD AND ME.

THAT'S WHEN I DECIDED I WANTED TO WORK IN HEALTHCARE. WHEN I FINISHED HIGH SCHOOL, I JUMPED RIGHT INTO THE SURGICAL TECH PROGRAM AT CLC AND HERE I AM NOW.





I KNEW MUCH LATER. DID YOU KNOW I USED TO MANAGE A SHOE STORE? I LOVED IT. I LIKED MY CUSTOMERS AND I LOVED THE SHOES- I MIGHT HAVE SPENT TOO MUCH OF MY PAYCHECK THERE.

BUT WHEN CORPORATE DECIDED TO CLOSE UP SHOP, I DECIDED I NEEDED BETTER JOB SECURITY. I WANTED TO START A FAMILY WITH FRANK AND WE WANTED TO BUY A HOUSE.



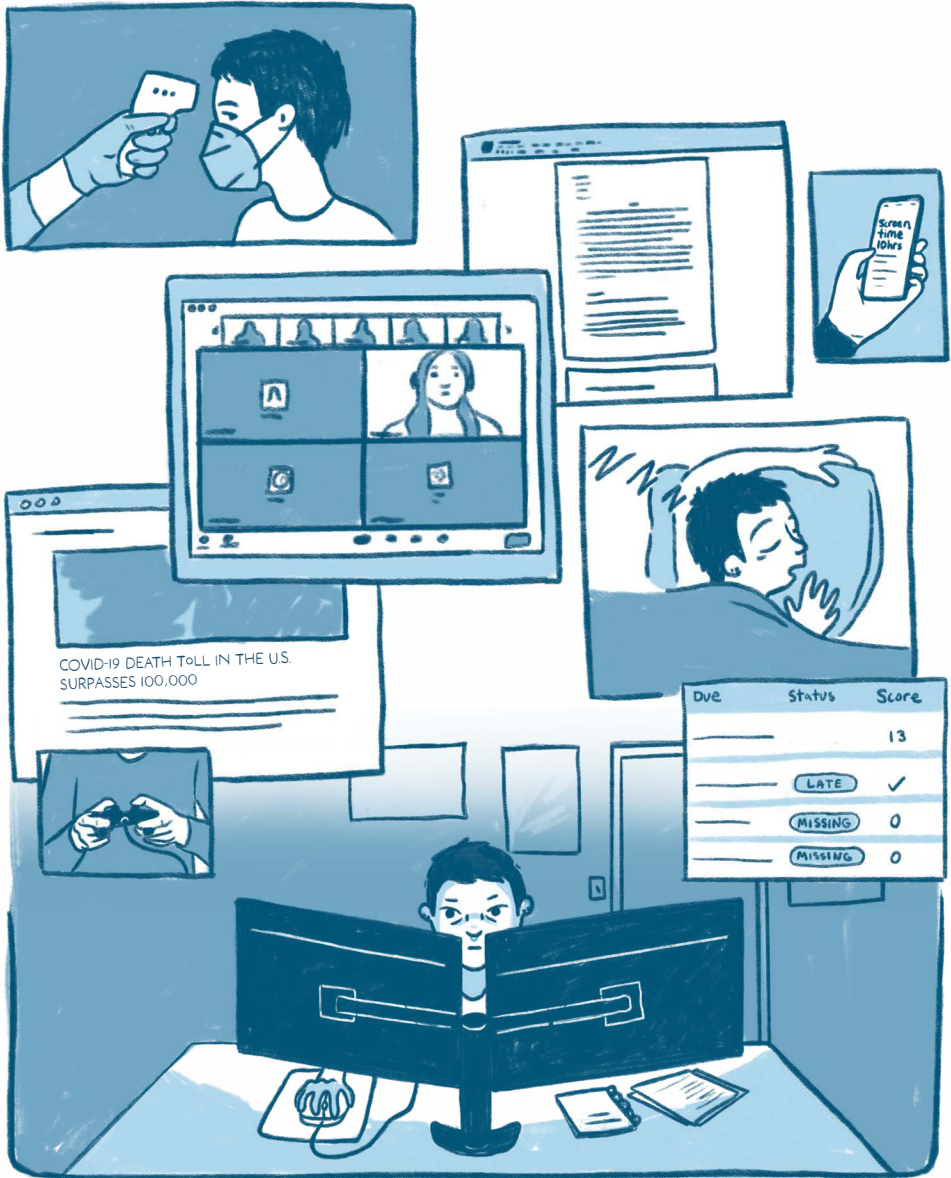
I FIGURED THEY'RE ALWAYS GOING TO NEED HEALTHCARE WORKERS. SO I STARTED TAKING CLASSES AT CLC.



FIRST, I EARNED MY ASSOCIATE DEGREE IN MEDICAL IMAGING. THEN I DECIDED TO GO FOR ANOTHER CERTIFICATE SO I CAN WORK AS AN MRI TECH, AND HERE I AM TODAY. I'M PROUD OF THE WORK I DO.







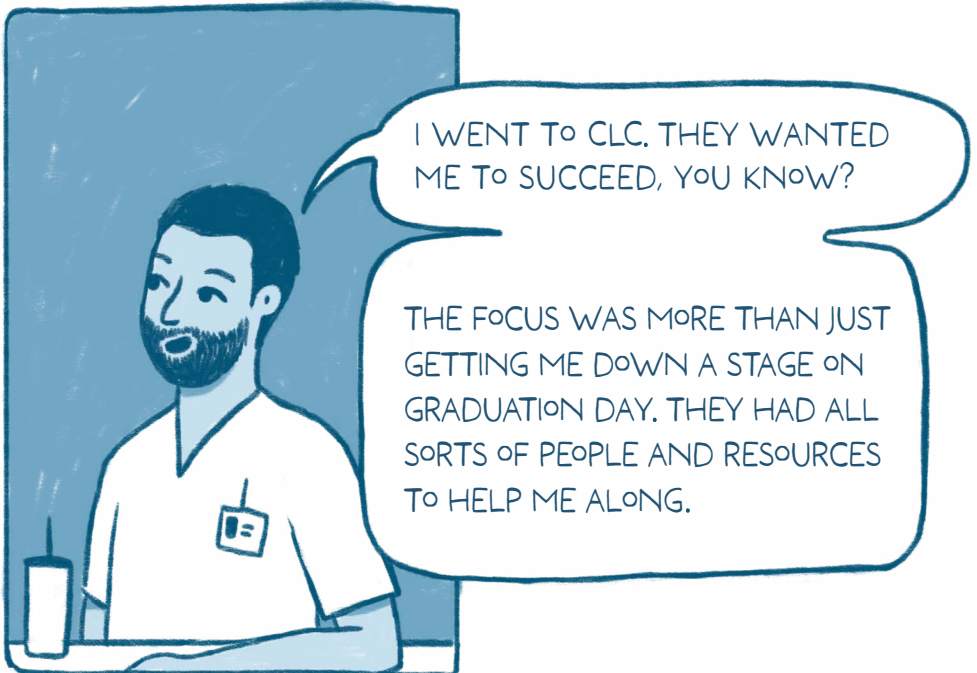
NOTHING'S WRONG WITH SCHOOL...  
I JUST DON'T KNOW IF MORE OF IT IS FOR ME.



I STRUGGLED IN HIGH SCHOOL, TOO.

I DID TOO, BUT COLLEGE WAS DIFFERENT.

HOW?



I WENT TO CLC. THEY WANTED ME TO SUCCEED, YOU KNOW?

THE FOCUS WAS MORE THAN JUST GETTING ME DOWN A STAGE ON GRADUATION DAY. THEY HAD ALL SORTS OF PEOPLE AND RESOURCES TO HELP ME ALONG.

IF I WAS HUNGRY, I COULD GO TO THE S.H.A.R.E. MARKET TO GET SNACKS, OR EVEN SCHOOL SUPPLIES. WHEN MY HOURS WERE CUT AT THE STORE, THE CAREER CENTER HELPED ME FIND A PAID STUDENT WORKER JOB.



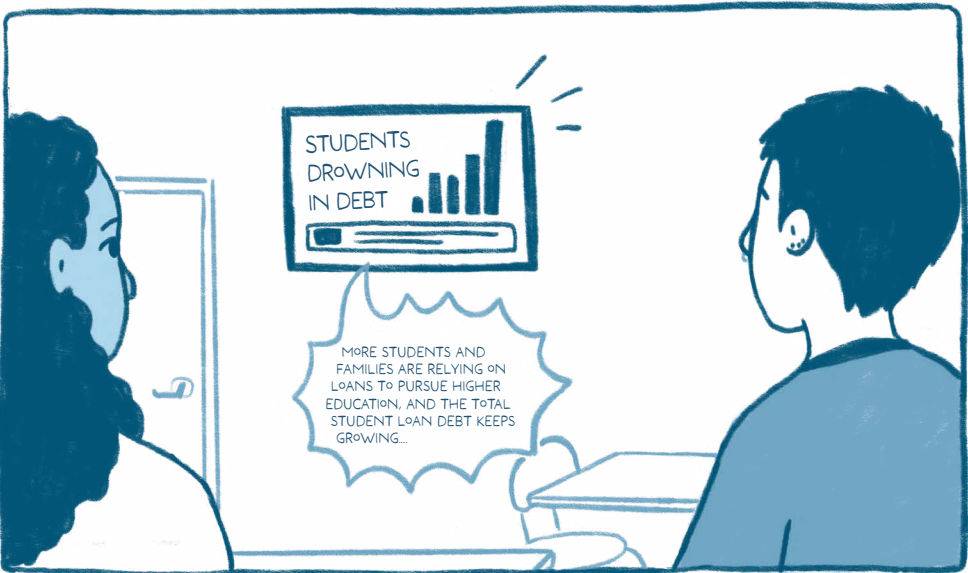
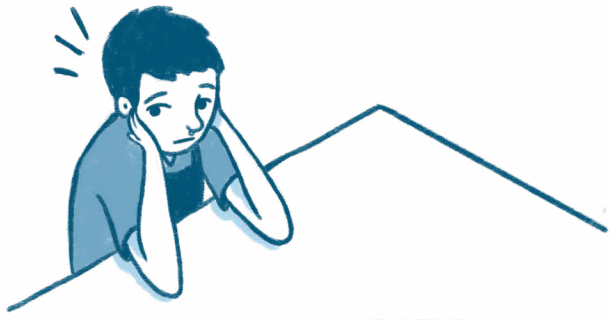
HEY! YOU TOLD ME THAT YOU ALMOST FAILED A CLASS!



THEY HELPED ME THEN, TOO!

MY ADVISOR SAW THAT I HAD AN OVERLOADED SCHEDULE AND HELPED ME BUILD A BETTER ONE FOR THE NEXT SEMESTER. MY PROFESSOR ALSO PUT ME IN TOUCH WITH A TUTOR. I'M TELLING YOU, THEY WILL GET YOU THROUGH THE PROGRAM.

TONIGHT AT NINE...





The Pipeline for the Advancement of the Healthcare Workforce Program or PATH gives students enrolled in eligible programs money to pay for tuition, books, uniforms, technology and other essential costs.

Here in Lake County, we need a lot of people in the healthcare field, and we're facing an even bigger worker shortage on the horizon. That's why the state of Illinois turned to community colleges to quickly get workers trained into exciting careers in healthcare. Since Lake County has a vast healthcare system, there are a lot of opportunities for graduates to find jobs close to home.

IF THERE WAS A FINANCIAL BARRIER FOR ANYONE TO PURSUE THESE PROGRAMS, IT'S NO LONGER THERE. THIS PROGRAM GIVES A GENEROUS, ALL-AROUND FINANCIAL PACKAGE TO SOMEBODY WHO WANTS TO GET A JOB IN HEALTHCARE.



- BIOLOGICAL AND HEALTH SCIENCES DEAN JEET SAINI



AND LOOK, THE HEALTHCARE FIELD NEEDS DIVERSITY. OUR COMMUNITY NEEDS TO SEE ITSELF REPRESENTED IN THESE HALLS. I KNOW I WANT SOMEONE WHO UNDERSTANDS ME TO ALSO TREAT ME.



YEAH, AND I WANT SOMEONE WHO **LITERALLY** UNDERSTANDS ME- OR MY DAD. SOMEONE WHO SPEAKS OUR LANGUAGE OR CAN HELP MY FAMILY WHEN WE NEED IT.

## WORDS MATTER

When medical providers do not have the language skills needed to properly serve the community, patients suffer. Non-native English speakers exhibit a lower rate of return for follow-up visits, resulting in poorer health outcomes.<sup>1</sup> As the number of non-native English speakers living in the U.S. increases, the need for bilingual medical staff becomes more essential.

## MATERNAL HEALTH

Black mothers have 3x higher maternal mortality and 2x higher morbidity than white mothers.<sup>2</sup>

<sup>1</sup>Server, J., & Baker, D.W., "Effect of language barriers on follow-up appointments after an emergency department visit" Journal of General Internal Medicine, 2000

<sup>2</sup>Gianna Melillo, "Racial Disparities Persist in Maternal Morbidity, Mortality and Infant Health," AJMC, June 13, 2020.

## PROVIDER BIAS & INEQUALITY OF CARE

When healthcare providers lack cultural understanding of certain populations, quality of care is negatively affected.

Conscious and unconscious biases are influenced by language, racial and cultural differences between the healthcare provider and patient. There are studies that show that bias can lead to under or misdiagnosis of mental health conditions in patients that are racially or ethnically different than their healthcare providers.<sup>3</sup>

## LACK OF PREVENTIVE CARE

A lack of trust between communities and providers can lead to an avoidance in seeking healthcare when needed, especially preventative healthcare.

A recent study showed that Black patients saw 12% more spending in the emergency room, and 26% less spending on outpatient care than the average person.<sup>6</sup>

## STRUCTURAL RACISM & DISCRIMINATION

These long-standing factors impact access to care and the kind of care received when oppressed and marginalized populations seek services.

In fact, a recent study found that white Americans receive a disproportionate share of U.S. healthcare dollars when compared to those who identify as Black, Asian or Hispanic.<sup>4</sup> In addition, Black patients have historically, and continue to be, negatively affected by prejudice and discrimination in the U.S. healthcare system.<sup>5</sup>

## ZIP CODE

Evidence suggests that the zip code in which you reside is a key social determinant of health.

Access to quality care, doctors, healthy food and safe and affordable housing all affect the care one receives in these zip codes.<sup>7</sup>

<sup>3</sup>Ani Turner, "The Business Case For Racial Equity: A Strategy For Growth", Altarum/W.K. Kellogg Foundation, July 24, 2018.

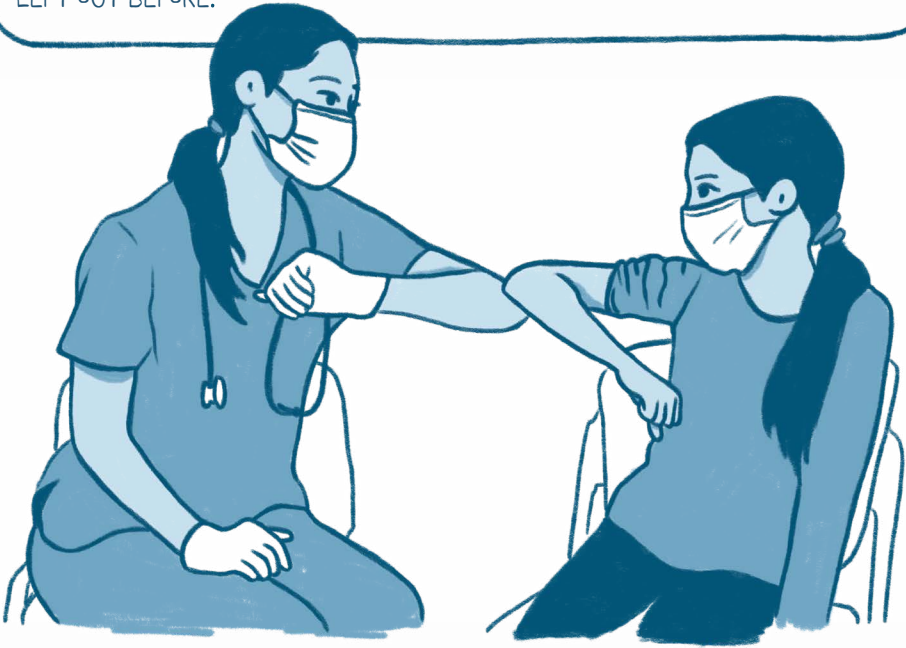
<sup>4, 6</sup>Katie Jennings, "White Americans Receive Greater Share of U.S. Healthcare Dollars, Study Finds," Forbes, Aug. 17, 2021.

<sup>5</sup>"Identity and Cultural Dimensions: Black/African American," Your Journey, National Alliance on Mental Illness (NAMI).

<sup>7</sup>Graham G. N., "Why Your ZIP Code Matters More Than Your Genetic Code: Promoting Healthy Outcomes from Mother to Child." Breastfeeding medicine: the official journal of the Academy of Breastfeeding Medicine, 2016



ONE THING ABOUT THE PANDEMIC, IT GAVE US AN OPPORTUNITY TO REBUILD THE HEALTHCARE INDUSTRY, SO THIS TIME IT INCLUDES THE FOLKS WHO WERE LEFT OUT BEFORE.

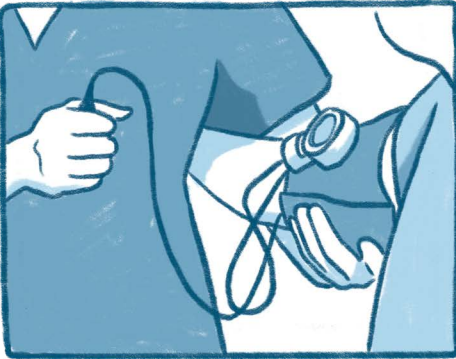


WE CAN MAKE THE WORKPLACE BETTER, SO WE CAN TREAT OUR COMMUNITY BETTER. THAT'S NOT AN OPPORTUNITY THAT COMES ALONG ALL THE TIME.





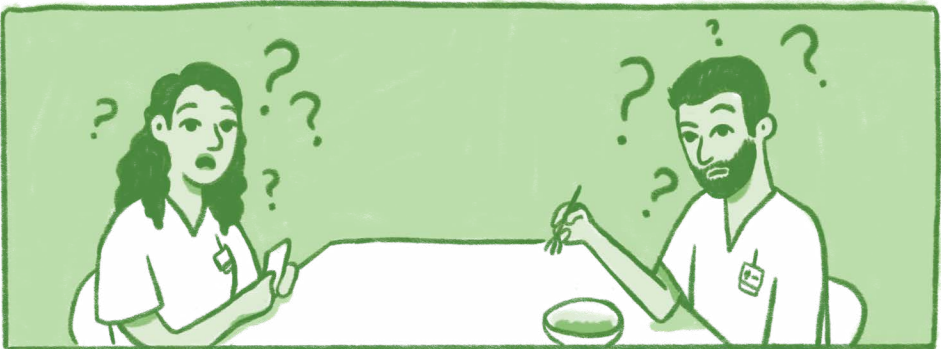


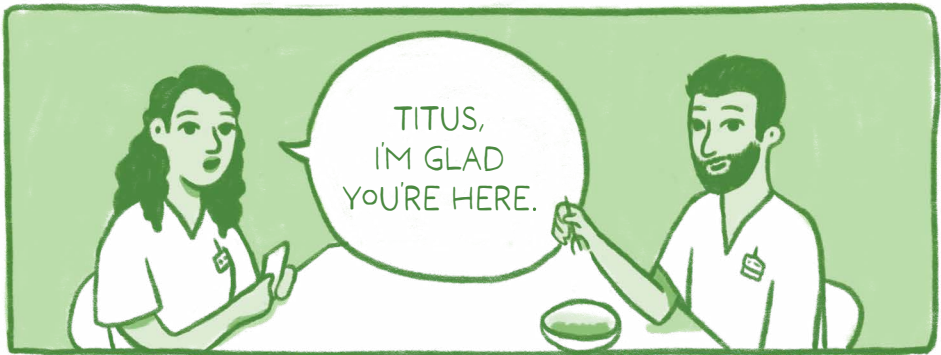






# TWO YEARS LATER...







Produced by the  
**College of Lake County Public Relations and Marketing Department**

Illustrated by **Maddy Asma**  
Written by **Jessey Prugh**

The Path to Better Care: Training Tomorrow's Healthcare Heroes was made possible through generous funding from the state of Illinois to address healthcare workforce inequities. Special thanks to College of Lake County's Biological & Health Sciences division for help with research.

To request a mailed copy of the graphic novel, email [pr@clcollinois.edu](mailto:pr@clcollinois.edu).  
For questions about the PATH program, email [BHSDV@clcollinios.edu](mailto:BHSDV@clcollinios.edu).

You can view this document digitally here:



Copyright 2023 by College of Lake County

GRAYSLAKE CAMPUS  
19351 W. Washington St.

WAUKEGAN CAMPUS (LAKESHORE)  
33 N. Genesee St.

VERNON HILLS CAMPUS (SOUTHLAKE)  
1120 S. Milwaukee Ave.

ADVANCED TECHNOLOGY CENTER  
7735 Grand Ave., Gurnee

ONLINE  
[www.clcillinois.edu/online](http://www.clcillinois.edu/online)

Prospective students can call  
(847) 543-2090

